

Lelo Victory

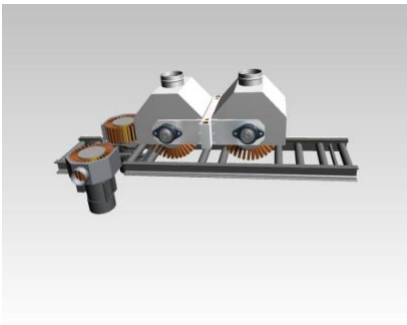


The LELO Victory is the perfect machine for sanding linear profiles made of wood, metal, plastic & composites.

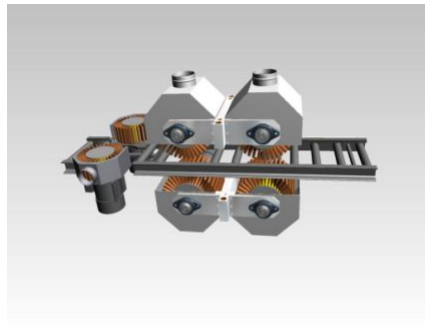
The machine can be supplied in many different configurations like TS, TB, TSB & TSSB depending on application.

It has been supplied with heavy duty motors and extra large sanding wheels for better performance and longer abrasive life.

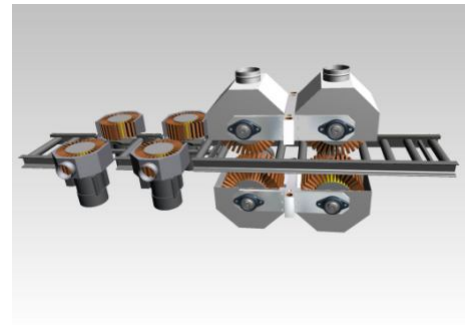
The Victory machine is easy to adjust in height, speed and pressure whether it is done manually or through PLC.



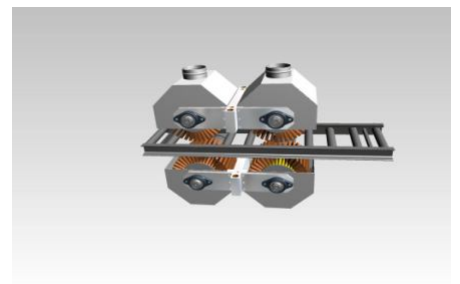
Victory-TS



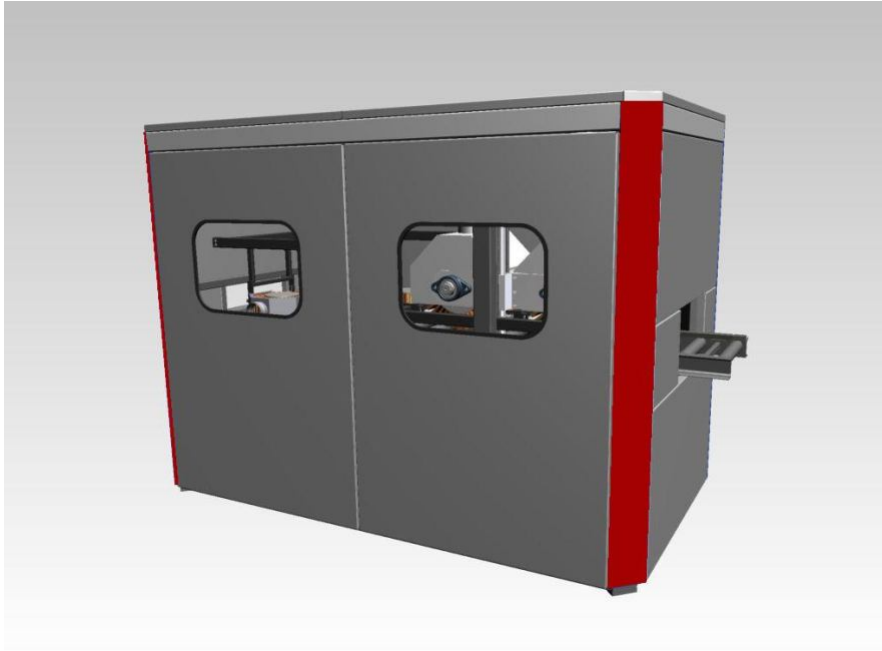
Victory-TSB



Victory-TSSB



Victory-TB



Specifications

Thickness of work piece:	Min 0mm - max 150mm (6")
Conveyor Roller width:	300mm (12")
Conveyor motor:	0,75 kw
Speed of conveyor belt:	3– 15 m/min. (9-45 f/min)
Diameter of side heads:	300mm (12") 1,1 kw
Diameter of top/bottom head:	400mm (16") 1,1 kw
Machine weight:	700– 1200 kg(1400-2400 LBS)
Machine dimensions	L=1935mm x W=1400mm x H=1786mm (smallest unit)
Machine dimensions:	L=76" x W=55" x H=70"

Standard features

- Heavy duty motors
- Easy changing of abrasives
- Heavy duty construction
- Extra large sanding wheels
- Easy adjustment of speed and height
- Easy adjustment of speed & height

Dealer:

